



**Berrien  
County  
Cancer  
Service**

**3900 Hollywood Road, St. Joseph, MI 49085  
www.bccancerservice.org 269.429.3281  
staff@bccancerservice.org**

**In honor of the committed service  
of Olove Colcord, R.N.**

**August 2019**

**VOLUME XXVI  
ISSUE VIII**

# Newsletter

## **THE MISSION OF THE BERRIEN COUNTY CANCER SERVICE:**

To provide compassionate in home skilled nursing care and supportive resources for those affected by cancer or related illnesses in Southwest Michigan.

## **The BERRIEN COUNTY CANCER SERVICE SUPPORT GROUP**

is a group of patients, family members and caregivers. Come share successes, feelings, fears and practical methods of coping with the physical and emotional aspects of living with the diagnosis of cancer.

## **CONTENTS**

Bulletin Board/ Upcoming Events....	2
Art Play Workshops....	3
Cancer Awareness....	3
Memorials/Tributes....	4
Looking Ahead/ Dates to Remember....	5
Board of Directors, Nursing/Office Staff....	6

## **IT'S SUCH A BUSY WORLD**

Ours days are so crowded and our hours are so few  
And there's so little time and so much to do  
That the days fly by and are over and done  
Before we have even half begun  
To do the things that we meant to do  
But never have time to carry through  
And how nice it would be if we stopped to say  
The things we feel in our heart each day!

*Unknown*

## **THANK YOU FOR SUPPORTING OUR MISSION**

It is YOU our community that enables us to care for those with cancer and related illnesses in our community. We are grateful for all the support and are honored that you trust us to do our best to provide in home skilled nursing care for our patients and those who need our assistance. **A special Thank You to Van's Medical Equipment for picking up, cleaning and delivering our durable medical equipment as a courtesy to BCCS in support of our community!**

## **Thought for the Day**

The world is wide and the world is grand and there's little or nothing new; but its sweetest thing is the grip of the hand of the friend that's tried and true.

*Unknown*



United Way  
of Southwest Michigan

# BCCS Bulletin Board

## SAVE THE DATES!!!

### **TEAM UP AGAINST CANCER**

September 20

Lakeshore Lancers vs. St. Joe Bears

### **LITTLE BLACK DRESS PARTY**

October 10

### **5<sup>th</sup> ANNUAL ART FESTIVAL –**

November 13

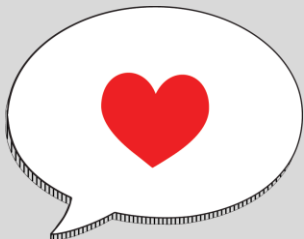
## Recent Star Givers

### Include:

**MILANO'S PIZZA** in Niles, MI for their golf outing with a very generous donation to help cancer patients and their families in Berrien County!

**CONNECTED SOLES** and **WATERMARK BREWERY** for their "Fun Run" generous donation.

**ST. JOHN'S EVANGELICAL LUTHERAN CHURCH** for their "very yummy" bake sale donation.



## Patient Remarks

"It is so good to know that someone cares and is willing to listen and help in time of need."

## **DID YOU KNOW...**

From January to June, **BCCS shared 126 pieces of durable medical equipment** such as wheelchairs, walkers, shower benches, transport chairs, commodes, etc., to people in our community. Your generous donations work to make this all possible!



### **"WAR BY THE SHORE"**

## **"Team Up Against Cancer" Raises Funds for Cancer Care in Southwest Michigan.**

Grab your pom-poms on September 20<sup>th</sup> and head over to the Lakeshore Lancers vs. St. Joe Bears football game at Dickinson Stadium. This community fundraiser is to help individuals fighting cancer, increase awareness and prevention, and celebrate survivors. Gates will open at 5:00 p.m. with local vendors offering a variety of food with all the sales benefiting Marie Yeager Cancer Center and Berrien County Cancer Service!

The St. Joseph High School marching band and cheerleaders will pay tribute to those affected by cancer and salute survivors as they parade into the stadium during a pre-game ceremony. **For more information or to sponsor a Game Jersey or purchase a T-Shirt (includes game admission) please visit <https://www.facebook.com/TUAC.BerrienCountyMI/> or Call BCCS**

## 10<sup>th</sup> Annual *Play Fore Pink*

### Denise Bohn Memorial Golf Outing

*Benefitting the Bohn-Stewart Children Education Fund & Berrien County Cancer Service*

**Sunday, October 6, 2019**

**Registration opens at 8:30 a.m. with a 10:00 a.m. shotgun start.**

**4 Person Scramble / \$90 per Player**

*Includes green fee & cart, light breakfast, baked potato bar lunch, and a free return round at the course.*

**Hole Sponsors:** \$100 each or 3 for \$200

**Lake Michigan Hills Golf Club**

**2520 Kerlikowske Road**

**Benton Harbor, MI**

For more information, call BCCS at 259-429-3281



# August is Lung Cancer Awareness Month



## **ART PLAY WORKSHOPS**

Dates and locations are as follows:

**Buchanan Art Center**  
**August 12 & September 9**  
**from 4:30-5:30 pm**

**Krasl Art Center**  
**August 15 & September 19**  
**from 4:30-6:00 pm**

These workshops are designed for families impacted by cancer and are designed for children and adults to learn side-by-side as they use clay, watercolor, and other media to express themselves through art. If you know of any children who have a family member or close friend with cancer or are a stable pediatric cancer patient, please have them call 269-429-3281 and ask for Nancy regarding these workshops. You can also find out more information on our website [www.bccancerservice.org](http://www.bccancerservice.org) or on our FB page: Berrien County Cancer Service, Inc.

**Special Appreciation to Chris and Molly Craft of KEY REALTY for their Premier Sponsorship of our Art Program.**

There are two main types of lung cancer, non-small lung cancer and small lung cancer. These two types include many different types of cells. The cancer cells of each type grow and spread in different ways. The types of small cell lung cancer are named for the kinds of cells found in the cancer and how the cells look when viewed under a microscope.

- Small cell carcinoma (oat cell cancer).
- Combined small cell carcinoma

Signs of non-small cell lung cancer include:

- Chest discomfort
- A cough that doesn't go away
- Trouble breathing
- Wheezing
- Blood in sputum
- Hoarseness
- Loss of appetite
- Weight loss for no known reason
- Feeling very tired
- Trouble swallowing
- Swelling in the face and or veins in the neck.

Below are some key points regarding Non-Small Cell Lung Cancer

- Non-small cell lung cancer is a disease in which malignant cells form in the tissues of the lung.
- There are several types of non-small lung cancer
- Smoking is the major risk factor for non-small cell lung cancer.
- Tests that examine the lungs are used to detect, diagnose and stage Non-Small Cell Lung Cancer.
- If lung cancer is suspected, a biopsy is done.
- Certain factors affect prognosis and treatment options.
- For most patients with non-small cell lung cancer, current treatments do not cure the cancer.

Risk factors for lung cancer include the following:

- Smoking cigarettes, pipes, or cigars, now or in the past
- Being exposed to secondhand smoke
- Being exposed to asbestos, arsenic, chromium, beryllium, nickel, soot, or tar in the workplace
- Being exposed to radon
- Living where there is air pollution
- Having a family history of lung cancer
- Being infected with the human immunodeficiency virus
- Taking beta carotene supplements and being a heavy smoker

Older age is the main risk factor for most cancers. The chance of getting cancer increases as you get older.

# In Loving Memory

Memorial Donations were generously made by and for the following people:

**In Memory of Scott Ross**

Gary and May Sisson  
Gerald and Jane Kabelman  
Wayne and Michelle Demchinski  
James and Anne Marie Jackson  
Glenn and Catherine Averill  
Melvin and Cynthia Krumm  
Cynthia and Richard Fechner  
Dan and Suzanne Fortenbacher  
John and Laurie Jewell  
John, Betty and Jerrold Grieser  
Kimberly Stan Blanz  
Karre and Jeffery Smith  
Marilyn Hettig  
William and Rhonda Fryer  
Marilyn Lomonoco  
Wayne and Janet Skaggs

**In Memory of James Millin, Sr.**

Sandra Horvath

**In Memory of Laretta Titman**

Terry Wilkins

**In Memory of Leslie Watts**

Nancy Hauch

**In Memory of Barbara Luthringer**

Ronald and Patricia Ganger

**In Memory of Ernest and Minnie Arent**

Alma Arent

**In Memory of Pastor Larry Easton**

Cynthia Rittase

**In Memory of Jon Grabmeyer**

Kathleen Cullitan

**In Memory of Richard Heckinger**

Laura Arterburn

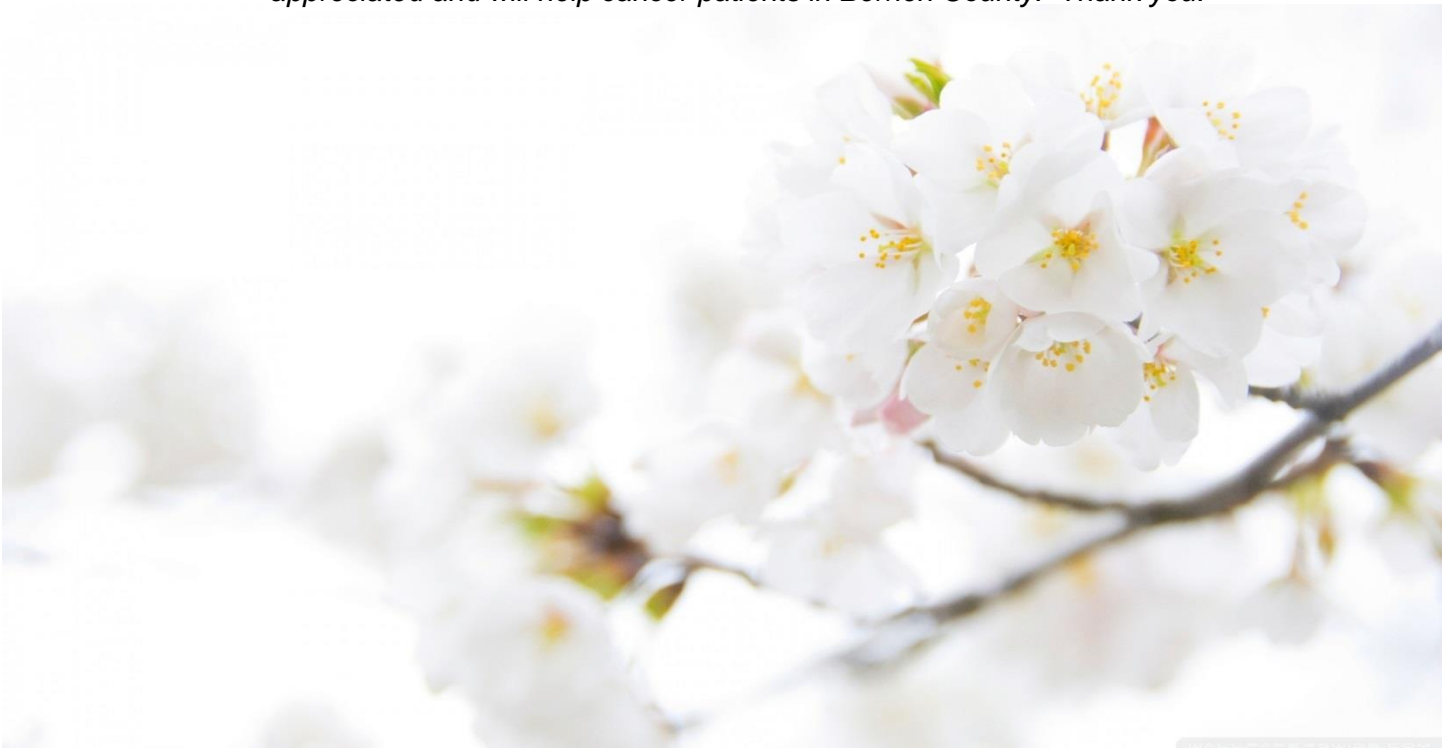
**In Memory of Bonnie Kurbis**

Dale and Joyce Gano

**In Memory of Patricia Macholtz**

Donna Janke

*Berrien County Cancer Service sends our sincere sympathy to all those who have recently lost loved ones. We thank all of our generous donors. Your donations are very much appreciated and will help cancer patients in Berrien County. Thank you.*



# Please Consider...

## Looking Ahead

### BCCS SUPPORT GROUP – Niles

August 20 - 1:30 pm  
September 17 – 1:3- pm

### BCCS SUPPORT GROUP – St. Joseph

August 13 - 2:30 pm  
September 10 – 2:30 pm

### CHILD & FAMILY SUPPORT GROUP Art Play Workshop

2nd Thursday at Marie Yeager Cancer Center

2nd Monday at the Buchanan Art Center  
Visit [www.bccancerservice.org](http://www.bccancerservice.org) or call  
BCCS at 269-429-3281 for details

### OSTOMY SUPPORT GROUP

Lakeland Regional Medical Center  
August 8 - 6:00 pm  
September 12 – 6:00 pm

\*\*\*\*\*

## DATES TO REMEMBER IN AUGUST

August 1<sup>st</sup> World Lung Cancer Day  
August 3<sup>rd</sup> Watermelon Day  
August 5<sup>th</sup> National Underwear Day  
August 7<sup>th</sup> Purple Heart Day  
August 10<sup>th</sup> National Garage Sale Day  
August 13<sup>th</sup> Intl. left Handed Day  
August 15<sup>th</sup> National Relaxation Day  
August 17<sup>th</sup> National Non-Profit Day  
August 19<sup>th</sup> Intl. Orangutan Day  
August 21<sup>st</sup> Senior Citizens Day  
August 25<sup>th</sup> Kiss and Make Up Day  
August 28<sup>th</sup> Crackers Over Keyboard Day  
August 30<sup>th</sup> National Toasted  
Marshmallow Day

### Newsletters available online

Our newsletters are available on our website: [www.bccancerservice.org](http://www.bccancerservice.org). If you would like to be removed from this mailing list, please call our office at 269-429-3281 or send us an e-mail: [staff@bccancerservice.org](mailto:staff@bccancerservice.org).

## Please Consider...

Berrien County Cancer Service, Inc., is a non-profit organization funded primarily by United Way, private donations and fund-raisers. We receive no Medicare, Medicaid or other insurance payments. To continue our free services to Berrien County cancer patients, we need your help. Any donation is greatly appreciated.

Donations to our General Fund will help balance our current budget. Donations to our Endowment Fund will help guarantee that the Cancer Service will be available for as long as needed. Your contribution to our non-profit 501(c)(3) corporation is tax deductible – an acknowledgment and receipt for tax purposes will be sent.

Donations can be made in honor of someone or in memory of a loved one. In these instances, we would also like to send acknowledgment to the honoree or next-of-kin so please provide that information when making your donation.

\_\_\_ General Fund \_\_\_ Endowment Fund

Your Name \_\_\_\_\_

Your Address \_\_\_\_\_

City/State/Zip \_\_\_\_\_

Donation Amount \$ \_\_\_\_\_

**OR**

In Memory of \_\_\_\_\_

Please send notification of my gift to:

Name \_\_\_\_\_

Address \_\_\_\_\_

City/State/Zip \_\_\_\_\_

**Thank you for your  
generosity!**

Berrien County Cancer Service, Inc.  
3900 Hollywood Rd  
St. Joseph, MI 49085

RETURN SERVICE REQUESTED

**JOIN THE NEWSLETTER VIA  
EMAIL**

Help us save postage, call 269-429-3281 or email us at [staff@bccancerservice.org](mailto:staff@bccancerservice.org). If you are not reading the newsletter, you may contact us to be removed also. We

NONPROFIT ORGANIZATION  
U.S. POSTAGE PAID  
STEVENSVILLE, MI  
PERMIT NO. 129



**BERRIEN COUNTY CANCER SERVICE, INC. - BOARD OF DIRECTORS:**

Joshua Simons	Chairperson	Tim Brown	*Peter Lai	*Dr. Edmund Paloyan
Dr. Gerald Kozuh	Vice Chairperson	*Dr. Fred Busse	*Barbara Lane R.N.	*Dr. Sapna Patel
Joseph Dick	Treasurer	Nancy Gothberg	*Dr. Eric Lester	Jolita Allene Smith
Dr. Melinda Gruber	Executive Comm	Sharon Hainer	Mike Levi	Karen Walker
		Darlene Hawkins	*Hannah Noble	
		*Dr. Betty Koshy		

\*Indicates Emeritus Members

**NURSING STAFF:**

Nancy Church, R.N. President/CEO  
Connie Demler, R.N.  
Debra Hansen, R.N.

Susan Lerke, R.N.  
Kimberly Penney, R.N.

**OFFICE STAFF:**

Kimberly McCoy Patient Care Coord  
Henrietta Hein Office Clerk  
Suzanne Arent Admin Assistant

**CANCER SUPPORT GROUP - St. Joseph**

2nd Tuesday of each month 2:30 p.m.  
Marie Yeager Cancer Center Second Floor  
3900 Hollywood Road  
St. Joseph, MI 49085  
Phone: (269) 429-3281  
Phone: (269) 983-8804

**CANCER SUPPORT GROUP – Niles**

3rd Tuesday of each month – 1:30 p.m.  
Greater Niles Senior Center  
1109 Bell Road  
Niles, MI 49120  
Phone: (269) 429-3281

**OSTOMY SUPPORT GROUP**

2nd Thursday of each month – 6:00 p.m.  
Spectrum Health Lakeland Regional Medical Center  
Community Room  
1234 Napier Ave.  
St. Joseph, MI 49085